



**In this issue:**

- page 1 **Mandate of the Mont O'Brien Association  
Results of AGM  
Thanksgiving Family Hike**
- page 2 **Spring and Summer at Mont O'Brien ....  
Biodiversity Reserve**
- page 3 **Map of the Mary Haydon Trail & Access Road**
- page 4 **Board member coordinates**

**Website:** [www.montobrienassociation.org](http://www.montobrienassociation.org)

***Mandate of the Mont O'Brien Association:***

- to maintain the wilderness environment of the Mont O'Brien area by protecting the numbers and varieties of flora and fauna,*
- while providing educational opportunities and recreational access to the forests, lakes, rivers and hills.*

**Annual General Meeting**

The AGM was held May 23, 2010, with Thorne mayor Ross Vowles presiding, and Irma Peck recording. Roy Peck stepped down after ten years of peerless service, and he continues to advise. Two new board members were elected, John Edwards of Venosta, who is experienced in administration and management, and Marie-Thérèse Kazeef, an active member of the Kazabazua community. Board meetings are held in Danford on the first Sunday of the month. See p. 4 for co-ordinates of board members.

**Seventh Annual  
THANKSGIVING FAMILY HIKE**

**Saturday, October 9, 2010  
9:30 a.m. – 1:00 p.m.  
Parking up the hill from Ross' Creek  
(Please see our map on page 3.)**

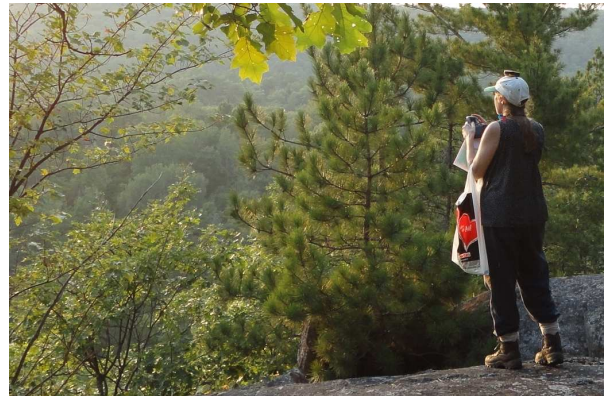
The Mont O'Brien Association invites you and your family to the Annual Thanksgiving family hike on Mont O'Brien. Come and see a spectacular view of the surrounding hills and the leaves in their full fall colours.

The hike takes a minimum of three hours (approximately 2 ½ miles). Be sure to bring water, a snack and good hiking shoes. Come celebrate with us!

**Volunteers will guide the hike, and provide hot tea or coffee and pan biscuits over the fire.**

**Questions? Contact Lori-Ann Russett (819) 467-4808 or John Edwards (819) 422-3638.**

\*\*\*\*\*





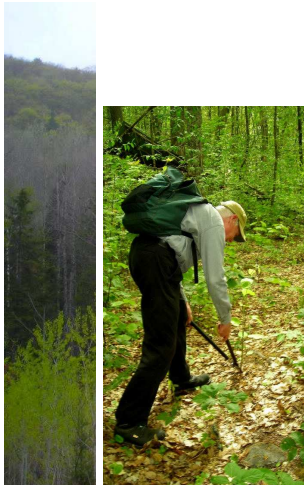
## Spring and Summer of 2010:

This spring we took down hunters' signs at the Mary Haydon Trailhead. The Ministry told us that we can post signs to keep hunters at least 500 metres away from hiking trails.

We identified plants, animals, and mushrooms all spring & summer, and prepared a list of species that are close to their northern limits.



(Painted trillium isn't one though.)

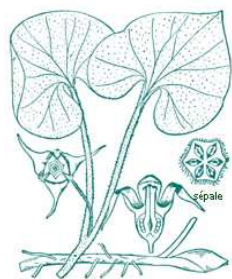


We trimmed and re-flagged the Mary Haydon Trail.



In the summer, Ron and Tyson helped brush the road from Ross's Creek to the Trailhead; Lake O'Brien was used by fisher-persons and a party or two.

We verified the presence of the rare protected plant species, "Squaw-root" (to left). Marie-Thérèse helped pick raspberries and blackberries, which should be abundant next year also.



Many plant species at Mont O'Brien are very close to their northern limits. The northern limits of others, such as "Wild Ginger", another protected species, are only a few miles south & southeast of Mont O'Brien. You can help protect the Reserve, and help make a record of climate change effects, by watching for species such as this & informing a board member.



Lunch at the summit in July.

We guided three biologists from the Natural Areas Branch of the Ministry on their evaluation of the Mont O'Brien Biodiversity Reserve.

**Protection:** This year the Association gained representation on a local public lands planning table. By working with the ministries, we try to protect these 25 square km of forest, lakes, wildlife and native biodiversity. The Association will submit a memoir in the upcoming Outaouais consultation on public lands planning ("PRDIRT").

In one year (October of 2011) we will need to prepare for a BAPE hearing on the permanent boundaries & management of the Biodiversity Reserve. Members are invited to help with this.

The board is presently applying for federal charitable status (tax receipts for donations). We have also applied for trail improvement grants through the Pontiac MRC. We are developing a long-term plan for compatible ecotourism to benefit the community.

## Become A Member

**Help build a legacy in the Danford Lake area, and have access to beautiful wilderness by becoming a member of the Mont O'Brien Association.**

Membership forms may be downloaded from the website: [www.montobrienassociation.org](http://www.montobrienassociation.org)

The 2010 annual family membership fee is \$15.00; it includes family members 17 years or younger. (A separate membership is required for age 18 years+.)

A \$5 gate key deposit is also required, and a key/responsibility form must be signed.

Mail the membership form and the annual membership fee of \$15.00 (and key deposit and form) to:

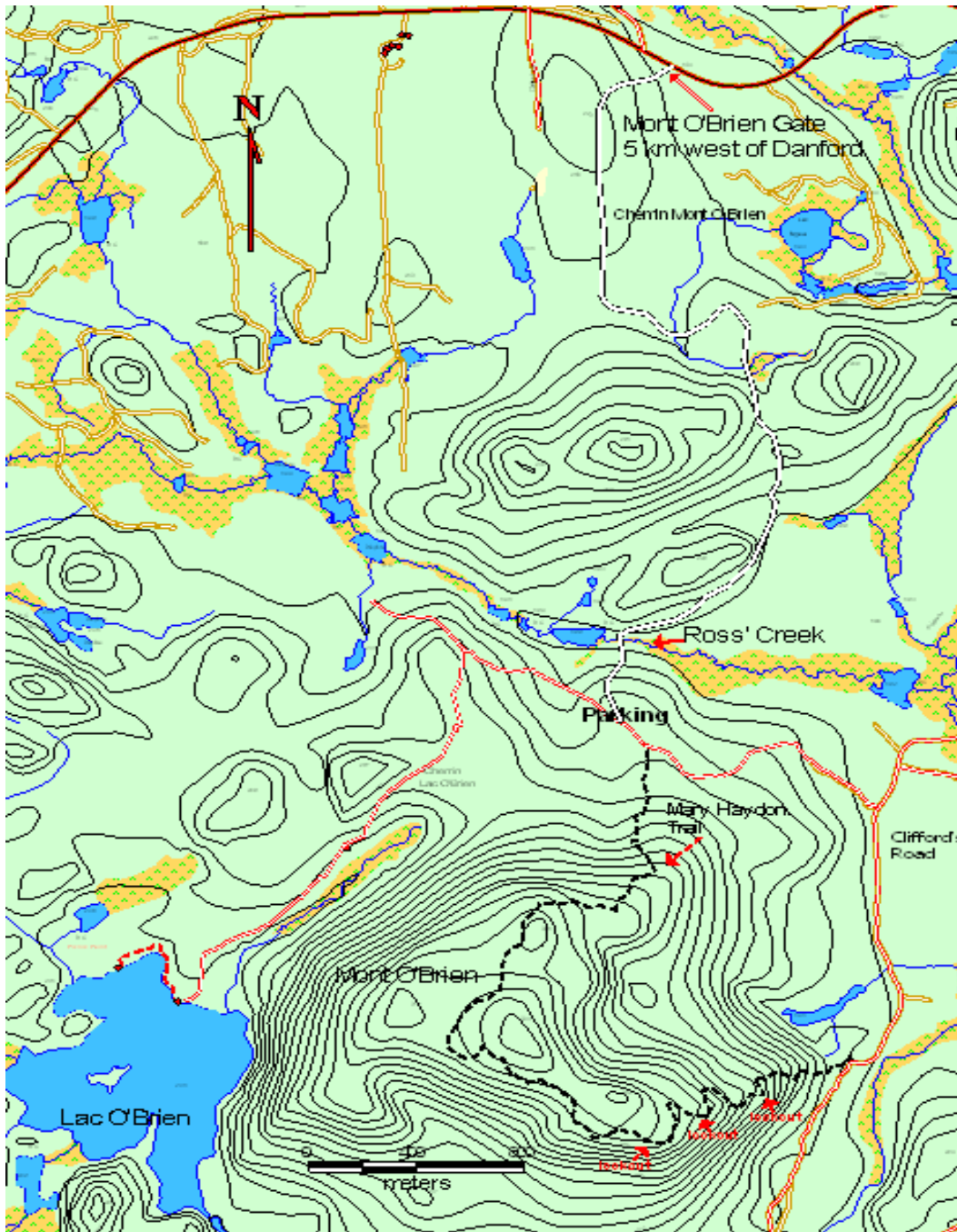
**Mont O'Brien Association, P.O. Box 904,  
Danford Lake, Qc J0X 1P0**

The Association has a Geographical Information Systems (GIS) program that was funded by Natural Resources Canada's Sustainable Communities Program in 2003.

With this GIS program, we are able to produce our own maps of the Mont O'Brien Biodiversity Reserve, using our own GPS data points along with base map layers from the Québec government.

This topographical map shows the Mont O'Brien access road on Highway 301, about 5 km west of the village of Danford Lake. There is a sign at the gate. It will be open on the morning of the Thanksgiving Family Hike.

Please drive in slowly and carefully to the parking area, which is up the little hill and about 300 metres south of Ross' Creek. We will gather there by 9:30 a.m. Saturday, Oct. 9 before the hike for a hot drink and to sign up.



The trail itself is about 4 km (2 ½ miles) long, and it is steep in one or two places. There will be transportation available for the road part of the hike so that it will not be so long, and a couple of experienced members will accompany the hikers. Please do not leave without telling the leaders.

If rain is heavier than small showers, the hike will be delayed one day to Sunday, Oct. 10 at the same time.

**To contact a board member:**

**Michael Walker, President**  
(819) 467-2219  
[mhwalker@ca.inter.net](mailto:mhwalker@ca.inter.net)

**Lindsay Peck, Vice-president**  
(819) 467-4259

**Paula Armstrong, Secretary**  
[pda@cam.org](mailto:pda@cam.org)

**John Edwards, Treasurer**  
(819) 467-5473

**Marie-Thérèse Kazeef, Membership**  
(819) 467-2580  
[marie-theresek@sympatico.ca](mailto:marie-theresek@sympatico.ca)

**Lori-Ann Russett, Municipal Representative**  
(819) 467-4808

[www.montobrienassociation.org](http://www.montobrienassociation.org)